



ASSAM ELECTRICITY GRID CORPORATION LIMITED (AEGCL)

(Backbone of Assam Power Network)

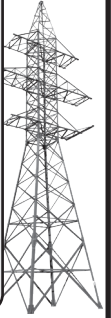


CAUTION NOTICE

In the interest of safety of human life and property, State transmission utility, AEGCL, which is involved in maintaining extra high voltage transmission lines, towers and associated grid Substations, requests the general public of the state of Assam to strictly adhere to the below mentioned guidelines/precautionary measures.



1. Cutting of trees in the close proximity of the transmission lines is extremely dangerous and should be done only by the authorized personnel of AEGCL.
2. It is illegal to construct any house or structure beneath the transmission line and its close vicinity.
3. Digging & Earth cutting around the footing of tower and engaging in plantation activities leading to damage of tower or transmission lines is strictly prohibited.
4. Since the level of water rises alarmingly in the water bodies during floods, safe distance is to be maintained while passing through the transmission lines.
5. Use of umbrella must be avoided while passing beneath the transmission lines to prevent electrocution.



MAJOR AREAS OF GUWAHATI CITY WHERE HIGH VOLTAGE LINES PASS THROUGH ARE GIVEN BELOW

1. **220 kV Sarusajai-Mirza line**
Lokhra-Ahomgaon-Garchuk-Pamohi-Deeporbeel wildlife sanctuary-Patgaon-Urput-Parakuchi-Satpakhali-Kukurmara
2. **220 kV Sarusajai-Jawaharnagar-Samaguri Line**
Khanapara- Patarkuchi-Basistha-Barlakhare-Near Central Jail- Sarusajai
3. **220kV Sarusajai-Sonapur-Samaguri line**
Khanapara-Patarkuchi-Basistha-Barlakhare-Near Central Jail-Sarusajai
4. **220kV Sarusajai-Karbilangpi line**
Khanapara-Patarkuchi-Basistha-Barlakhare-Near Central Jail-Sarusajai
5. **32 kV Kahilipara- Dispur (Capital)-Chandrapur line**
Chandrapur-Panikhaiti-Bonda Gaon- NarengiTinali-Narengi ASEB Area-Patharquarry-Borbari-Hengrabari-Dispur-Kahilipara
6. **132 kV Kahilipara- Sarusajai line**
Kahilipara(near PGCIL)-Kahilipara (Mon Vikash Kendra Field)-Lokhra (Lal Ganesh Main Road)-Sarusajai
7. **132 kV Sarusajai-Kamakhya-Sishugram Line**
Sarusajai-Lokhra-Kahilipara-Kala Pahar- Fatasil Ambari-Fatasil Hills- Maligaon-Kamakhya
8. **132kV Kahilipara-Meghalaya Line**
Kahilipara-Hatigaon-Bhetapara-Patarkuchi-151 Base Hospital(Basistha)
9. **132kV Kahilipara-Narengi-Sonapur line**
Kahilipara-Dispur-Sarumotoria-Hengerabari-Borbari-Narengi-Panikhaiti-Hatisila-Chandrapur-Sonapur
10. **132kV Kahilipara-AIIMS line**
Kahilipara-Kala Pahar- Fatasil Ambari-Fatasil Hills-Maligaon-Kamakhya-Ghoramara-IIT Guwahati-Changsari-AIIMS

Contact numbers: Any information regarding cutting of trees in proximity of transmission line and **snapped conductor/collapsed towers** may be informed via the helpline number below or nearest Grid Substation of AEGCL:

Kahilipara Control Room: 9401040871, 9954192059, 7637026781

Sarusajai Control Room: 9954192089, 8486035594

Dispur Control Room: 9954190598, 8011002953

Chandrapur Control Room: 9954192060

Kukurmara (Mirza) Control Room: 8811093758

Jawaharnagar Control Room: 9707793659, 7086013126

Kamakhya Control Room: 9435846697

AEGCL website: www.aegcl.co.in